

CHAMBER COVERS DN 600

HIRO manifold chambers sizes S to XXL, W12 and W16 come with a standardized chamber neck featuring a 600 mm clear entry opening and an exactly fitting gasket. Thanks to this structural design the cover type can be freely selected, based on the required load class. If wall collars are used, the chambers can also be installed in foundation slabs.

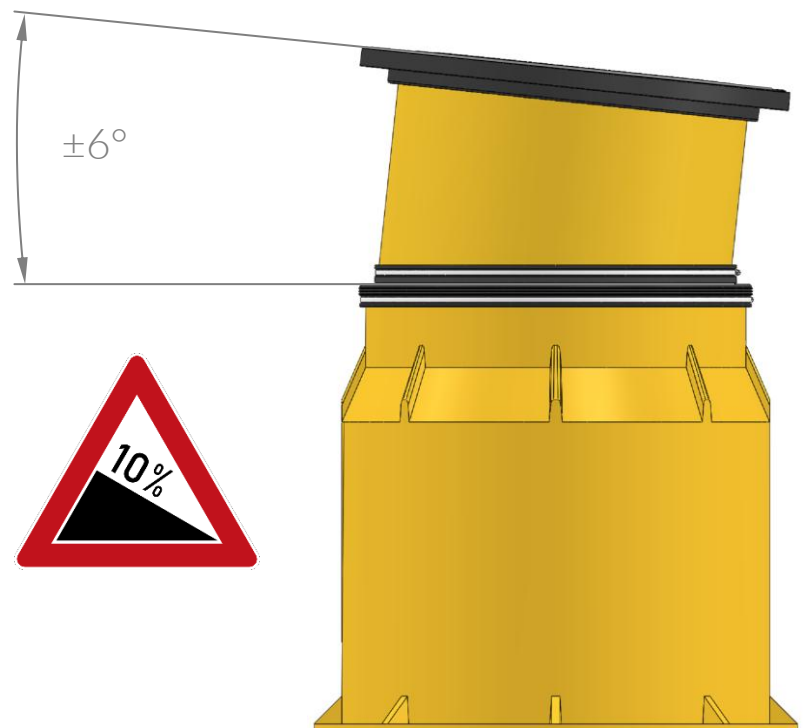
CLASSIFICATION/USE CASES

According to EN 124 and ISO 15398 our chamber covers are allowed for the following use cases:

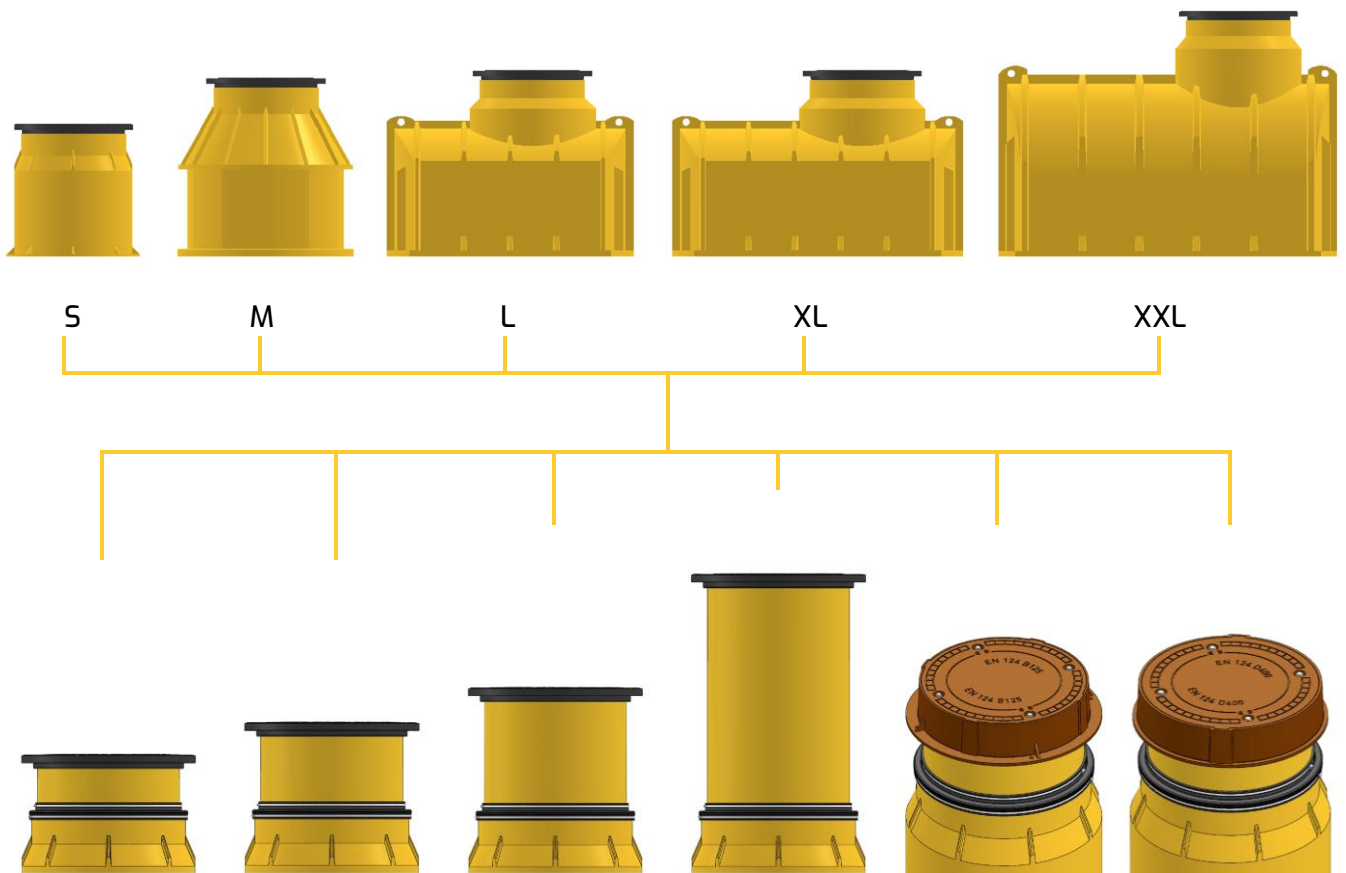
A35 (3.5 t)	Primarily for areas where only pedestrians and light vehicles are anticipated, like private driveways.
B125 (12.5 t)	Appropriate for driveways, footpaths, grass verges, and car parks where there's light vehicular traffic.
D400 (40 t)	Used in areas with heavy traffic, such as carriageways, hard shoulders, and parking areas for all types of vehicles.

Note: The load class according to the norm refers to the test load used. The actual load-bearing capability during continuous use stands at only 25–30% of the test load.

The flexible gasket system of HIRO is suitable for installing all our telescopic chamber covers in slopes with a gradient of up to 10 %. In such case, the chamber body itself is installed horizontally.



CHAMBER BODY



Telescopic cover				Heavy-duty cover	
ABD-TD+150	ABD-TD+300	ABD-TD+450	ABD-TD+950	ABD-B125	ABD-D400
Load category*					
A 35	A 35	A 35	A 35	B 125	D 400

AVAILABLE ACCESSORY EQUIPMENT

- Wall collar for watertight installation under foundation slabs.
- Concrete ring for asphalt installation of plastic chamber cover A35.
- Support ring made of plastic or concrete.

*The stated load class can only be guaranteed if the cover is professionally installed to ensure the correct distribution of the loads on surface.

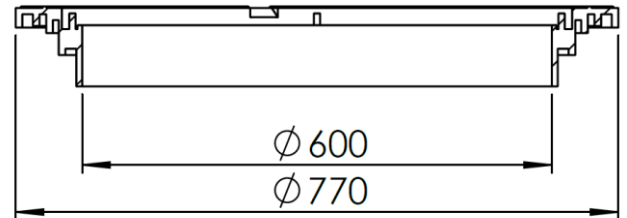
CHAMBER COVER 3.5 T

ITEM NUMBER: ABD-A35

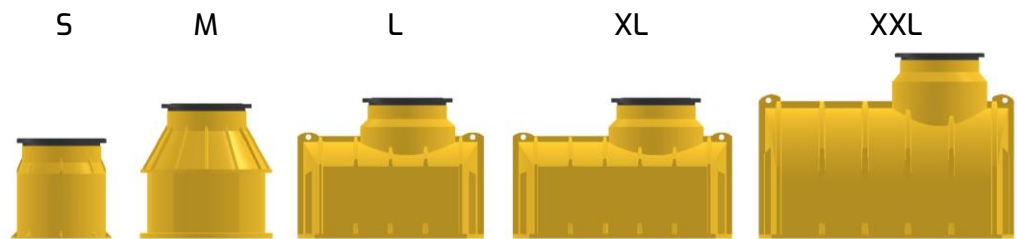
All HIRO manifold chambers in sizes S to XXL come with strong, heavy-duty yet light-weight DN 600 plastic covers that meet ISO 15398 load class A35 (3500 kg).

They are rainwater-tight and odor-proof thanks to a special elastomer-soft rubber gasket. Four stainless steel bolts keep the cover securely in place and prevent unauthorized removal.

In the standard configuration chamber neck and cover frame are joined with an airtight and watertight weld. HIF offers telescopic covers in three heights for flexible adjustment to the site topography. See table below for achievable installation heights.



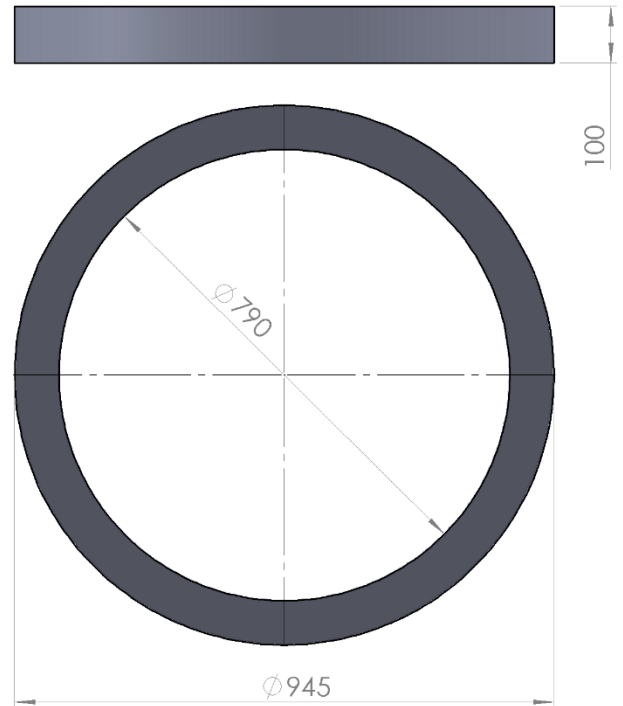
TOTAL HEIGHT INCLUDING CHAMBER COVER [MM]



	S	M	L	XL	XXL
ABD-A35 (Watertight welding)	860	1.160	1.210	1.210	1.595
ABD-TD+150	910 - 1.050	1.210 - 1.350	1.260 - 1.400	1.260 - 1.400	1.640 - 1.785
ABD-TD+300	910 - 1.195	1.210 - 1.495	1.260 - 1.545	1.260 - 1.545	1.640 - 1.930
ABD-TD+450	910 - 1.350	1.210 - 1.650	1.260 - 1.700	1.260 - 1.700	1.640 - 2.085
ABD-TD+950	910 - 1.850	1.210 - 2.150	1.260 - 2.300	1.260 - 2.300	1.640 - 2.585

CONCRETE PROTECTION RING

ITEM NUMBER: BSR

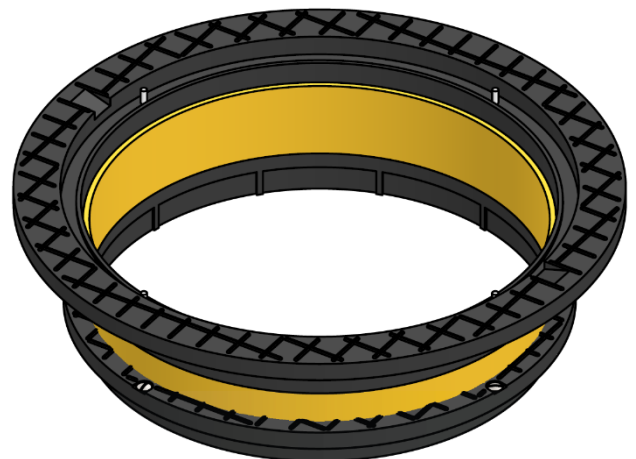


Concrete protection ring for installing plastic chamber cover ABD-35K in asphalt surfaces.

SHAFT COVER EXTENSION 3.5T

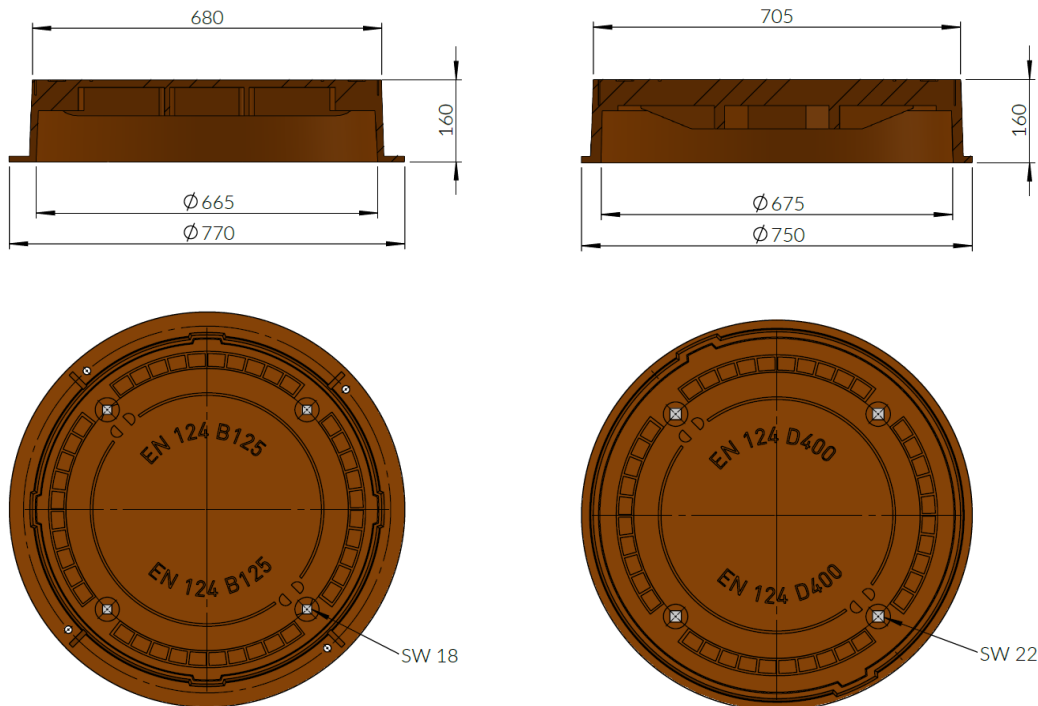
ITEM NUMBER: ZB-ABD-AS-A35

Should a HIRO manifold chamber with a welded A35 cover have been buried too deep in the ground, our custom-made chamber tops can serve as solution. The tops are screwed onto the existing cover frame without affecting watertightness. The increase in height can be chosen freely but must not be below 100 mm.



CHAMBER COVERS 12.5 T AND 40 T

ITEM NUMBER: ZB-ABD-B124-G, ZB-ABD-D400-G



The HIRO cast iron heavy-duty covers are designed according to DIN EN 124. They are rainwater-tight and odor-proof, and come with an oil- and petrol-resistant gasket..

Installation is carried out using a telescopic insert that is secured at the desired installation height and inclination using the HIRO manhole neck seal. The load must be transferred into the surrounding ground structure by means of a **support ring** or a **load distribution plate**. The achievable installation heights are shown in the table below.

TOTAL HEIGHT INCLUDING CHAMBER COVER [MM]

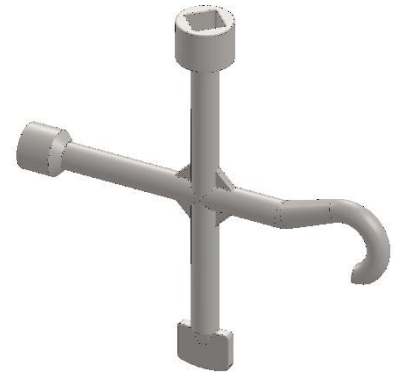
	S	M	L	XL	XXL
ABD-B125-G	1.150 - 1.370	1.450 - 1.670	1.500 - 1.720	1.500 - 1.720	1.880- 2.100
ABD-D400-G	1.150 - 1.370	1.450 - 1.670	1.500 - 1.720	1.500 - 1.720	1.880- 2.100



LIFTING- AND OPERATING-KEY

ITEM NUMBER: SCH-SW17-22

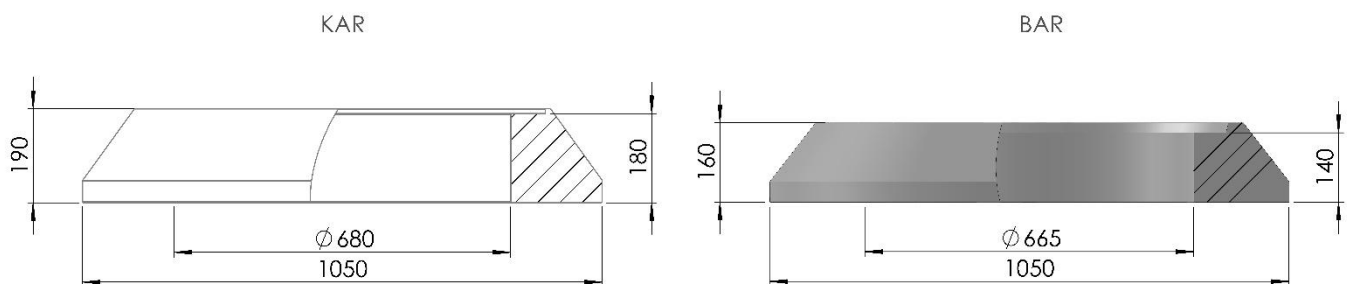
Lifting key and operating key for heavy-duty covers with wrench size 17 for square screws M16-18, wrench size 22 for square screws M20-23 as well as lifting shovel and lifting hook.



SUPPORT RINGS

ITEM NUMBER: KAR, BAR

Support rings for load transfer, in lightweight plastic or heavy concrete versions, both approved up to class D400.



CHAMBER WALL COLLAR

ITEM NUMBER: MAK-670

Wall collars are sealing systems used for the watertight installation through concrete walls and foundations where pipes or chambers are directly embedded in poured concrete. The HIRO chamber wall collar functions based on the same principle.

Two stainless-steel band clamps hold the wall collar in place during concrete pouring, preventing slipping or shifting. If applied correctly, the sealing is watertight and forms an impermeable barrier to radon gas.

